

Achieve High-Quality Compost with Gujer Compost Turning Machines



TG 201
For compact loaders

Compost Turner TG 201

Our completely redesigned compost turners are lightweight and compact with an independent hydraulic drumdrive. Various models are available: tractor-pulled, bucket loader-driven or self-propelled units.

The technology

- ▶ Easy to operate, mechanically propelled model (TG 301 mechanical)
- ▶ Hydraulically propelled models (TG 301 und TG 201)
- ▶ Fully hydrostatic model SGF 3100 (SF 3400 and 4000 in separate brochure)

Built with heavy duty components such as:

- ▶ Saurer Danfoss
- ▶ Perkins engines etc.



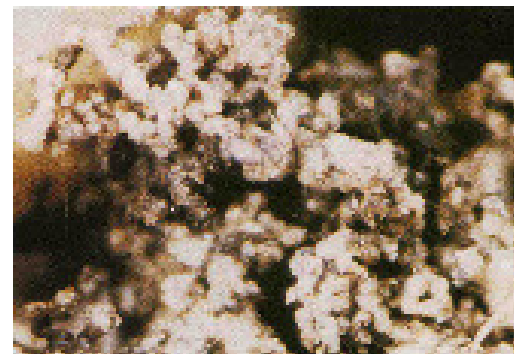
The core of each compost turner is the heavy duty and state-of-the-art drum.



Why turn compost?

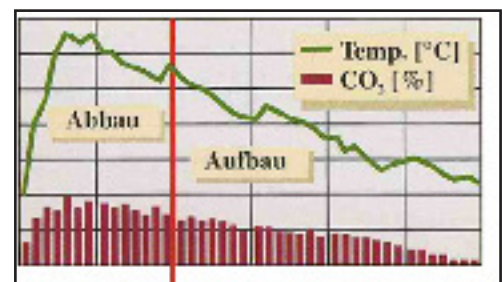
Our turners, your advantage:

- ▶ Low maintenance cost because of our high quality manufacturing sturdy construction and optimized design! Contact us and we will be pleased to explain the advantages to you.
- ▶ easy operation and handling
- ▶ gentle drum action preserves the crumb structure
- ▶ No odor! Our equipment, in combination with the proper composting method ensures optimized material condition, thus guaranteeing an aerobic composting process, which produces no offensive odors.
- ▶ Minimized wear on (gravel) roads due to our side-swivel counterweight (TG 301)
- ▶ Many options for customization
- ▶ Optimal control of windrow position through lateral shifting appliance; your windrow always stays where it should (option)



Krümelstruktur 1 : 50

The oxygen content of compost windrow must be observed on a daily basis. The Lübke-Hildebrandt composting method uses a substitution test via CO²-monitoring. If the CO² content of a windrow rises above 12%, the oxygen level drops under 5%. An aerobic rotting process requires at least 5% oxygen. Therefore the windrow must be turned as soon as the CO²-content rises above 12%. Even during long term storage of mature compost, the CO²-production of the final product must not exceed 1%.



Temperature and CO₂ in the compost windrow

Our little one! Convincing performance, for skid-loaders



For compactloaders with overall width until 1.60m.

Designed for smaller composting facilities, and the intention to produce highest-quality compost. Capacity up to 300 m³/h.

Ideal for agriculture, gardening business, organic farms and small communities.

- ▶ Easy operation and handling
- ▶ easily manually rotatable
- ▶ Top-Tex fleece underpassing
- ▶ Access to watering manifold with diffuser nozzles

Options

- ▶ Easy coupling on request



TG 201 in transport position



TG 201 in work position (rotated 90 degrees)



Easy coupling



Easy cuppling system



Locking after swiveling the tunnel



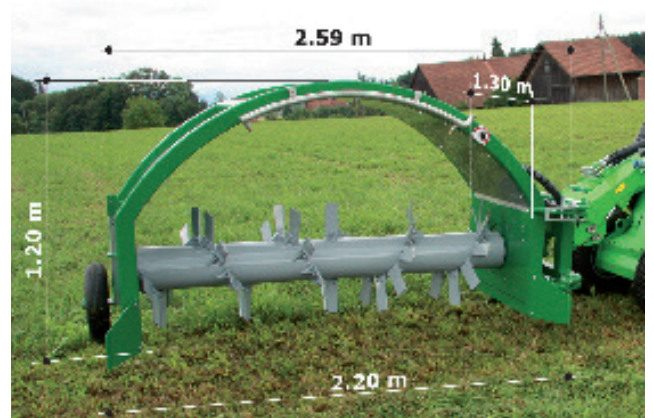
TG 201 during work with fleece underpassing.



TG 201 working with 4 weeks old horse dung.

Technical Data

Required compact loader	min. 25hp
Tunnel width	2,2 m
Hydraulic pressure	200 Bar, 40 lt
Working speed at full throttle	max.300 m/h
Weight	400 kg
Total length (transport position)	2,59 m
Width	1,03 m
Tunnel height	
Tunnel material chrome steel	1,20 m



GUJER INNOTEC AG

Umwelt und Kompostiertechnik

Your
Dealer

Consulting:

Daniel Büchi

tractor-pulled machines mech. and hydr.

Marcel Stähli

SGF 3100 self-propelled

Sales:

René Gujer

TG, general

Administration:

Sandra Wuethrich

Gujer Innotec AG

Horbenerstrasse 7
CH-8308 Mesikon

Tel. + 41 52 346 21 94

Fax + 41 52 346 21 93

rene.gujer@gujerland.ch

www.gujerinnotec.ch

